

- 1
- 2
- 3
- 4
- 5
- 6
- 7
- 8
- 9
- 10
- 11
- 12
- 13
- 14
- 15
- 16
- 17
- 18
- 19

VERSIONS

- Type **A1**: pass-through hole
- Type **A2**: Through-hole with continuous thread
- Type **A3**: Through-hole with thread on both sides

AISI 316L stainless steel
Matte finish (Ra < 0.8 µm) **MT**

Sealing ring

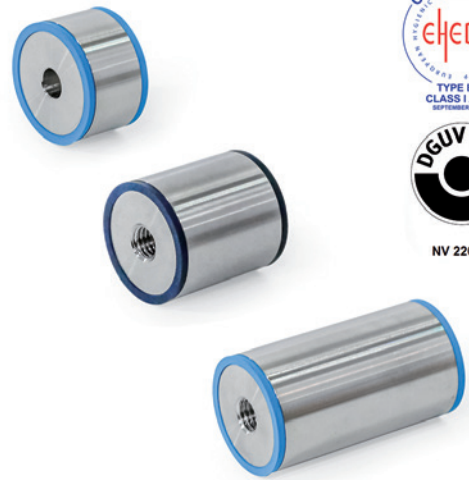
- H-NBR **H**
Temperature resistant -25 °C to +150 °C
- EPDM **E**
Temperature resistant -40 °C to +120 °C
- FKM **F**
Temperature resistant -5 °C to +200 °C
- Blue
- Hardness 85±5 Shore A
- FDA compliant

FEATURES AND APPLICATIONS

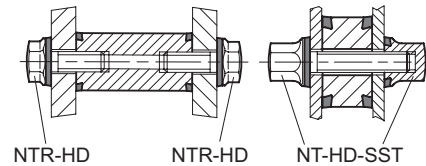
Stainless steel spacers GN 6226 are certified according to EHEDG and DGVU Test guidelines and are intended for use in hygiene areas. The sealed mounting surfaces enable fastening without dead spaces. The high quality finish prevents adherence of dirt and facilitates cleaning. Spacers are used to fasten parts at an offset parallel to their plane of installation. This avoids doubling up on surfaces and leaves space for cleaning. The internal thread can alternatively be used as a through hole by a screw with a smaller thread.

ACCESSORY

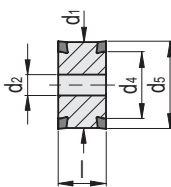
Seals GN 7600



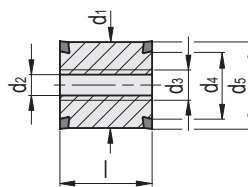
Application examples



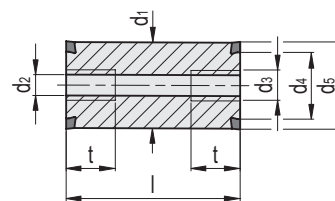
GN 6226-A1-H



GN 6226-A2-H



GN 6226-A3-H



GN 6226-A1-H

Code	Description	d1	d2 Through-hole for screw	d4	d5	l ±0.1	⚖
GN.33002	GN 6226-22-10-A1-MT-H	22	M 5	18	22.8	10	26
GN.33004	GN 6226-22-12-A1-MT-H	22	M 5	18	22.8	12	32
GN.33006	GN 6226-22-16-A1-MT-H	22	M 5	18	22.8	16	43
GN.33022	GN 6226-28-12-A1-MT-H	28	M 6	24	28.8	12	52
GN.33024	GN 6226-28-16-A1-MT-H	28	M 6	24	28.8	16	70
GN.33026	GN 6226-28-20-A1-MT-H	28	M 6	24	28.8	20	89
GN.33042	GN 6226-34-12-A1-MT-H	34	M 8	30	34.8	12	77
GN.33044	GN 6226-34-16-A1-MT-H	34	M 8	30	34.8	16	104
GN.33046	GN 6226-34-20-A1-MT-H	34	M 8	30	34.8	20	131

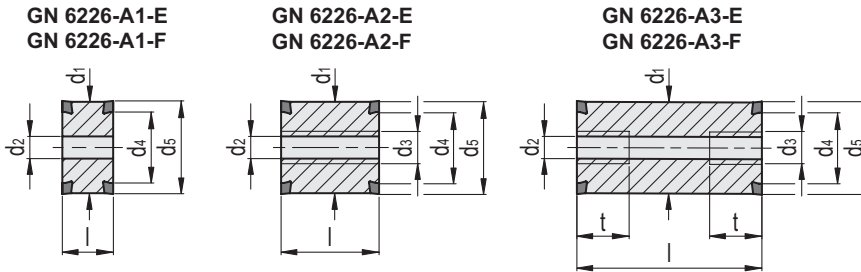
GN 6226-A2-H

Code	Description	d1	d2 Through-hole for screw	d3	d4	d5	l ±0.1	⚖
GN.33008	GN 6226-22-20-A2-MT-H	22	M 5	M6	18	22.8	20	55
GN.33028	GN 6226-28-30-A2-MT-H	28	M 6	M8	24	28.8	30	135
GN.33048	GN 6226-34-30-A2-MT-H	34	M 8	M10	30	34.8	30	199

GN 6226-A3-H

Code	Description	d1	d2 Through-hole for screw	d3	d4	d5	l ±0.2	t min.	⚖
GN.33010	GN 6226-22-30-A3-MT-H	22	M 5	M6	18	22.8	30	12	83
GN.33012	GN 6226-22-50-A3-MT-H	22	M 5	M6	18	22.8	50	12	141
GN.33030	GN 6226-28-50-A3-MT-H	28	M 6	M8	24	28.8	50	16	228
GN.33032	GN 6226-28-75-A3-MT-H	28	M 6	M8	24	28.8	75	16	335
GN.33050	GN 6226-34-50-A3-MT-H	34	M 8	M10	30	34.8	50	20	344
GN.33052	GN 6226-34-100-A3-MT-H	34	M 8	M10	30	34.8	100	20	676

Standard machine parts



GN 6226-A1-E

INOX STAINLESS STEEL

Code	Description	d1	d2 Through-hole for screw	d4	d5	l ±0.1	⚖
GN.33001	GN 6226-22-10-A1-MT-E	22	M 5	18	22.8	10	26
GN.33003	GN 6226-22-12-A1-MT-E	22	M 5	18	22.8	12	32
GN.33005	GN 6226-22-16-A1-MT-E	22	M 5	18	22.8	16	43
GN.33021	GN 6226-28-12-A1-MT-E	28	M 6	24	28.8	12	52
GN.33023	GN 6226-28-16-A1-MT-E	28	M 6	24	28.8	16	70
GN.33025	GN 6226-28-20-A1-MT-E	28	M 6	24	28.8	20	89
GN.33041	GN 6226-34-12-A1-MT-E	34	M 8	30	34.8	12	77
GN.33043	GN 6226-34-16-A1-MT-E	34	M 8	30	34.8	16	104
GN.33045	GN 6226-34-20-A1-MT-E	34	M 8	30	34.8	20	131

GN 6226-A2-E

Code	Description	d1	d2 Through-hole for screw	d3	d4	d5	l ±0.1	⚖
GN.33007	GN 6226-22-20-A2-MT-E	22	M 5	M6	18	22.8	20	55
GN.33027	GN 6226-28-30-A2-MT-E	28	M 6	M8	24	28.8	30	135
GN.33047	GN 6226-34-30-A2-MT-E	34	M 8	M10	30	34.8	30	199

GN 6226-A3-E

Code	Description	d1	d2 Through-hole for screw	d3	d4	d5	l ±0.2	t min.	⚖
GN.33009	GN 6226-22-30-A3-MT-E	22	M 5	M6	18	22.8	30	12	83
GN.33011	GN 6226-22-50-A3-MT-E	22	M 5	M6	18	22.8	50	12	141
GN.33029	GN 6226-28-50-A3-MT-E	28	M 6	M8	24	28.8	50	16	228
GN.33031	GN 6226-28-75-A3-MT-E	28	M 6	M8	24	28.8	75	16	335
GN.33049	GN 6226-34-50-A3-MT-E	34	M 8	M10	30	34.8	50	20	344
GN.33051	GN 6226-34-100-A3-MT-E	34	M 8	M10	30	34.8	100	20	676

GN 6226-A1-F

Code	Description	d1	d2 Through-hole for screw	d4	d5	l ±0.1	⚖
GN.33061	GN 6226-22-10-A1-MT-F	22	M 5	18	22.8	10	26
GN.33062	GN 6226-22-12-A1-MT-F	22	M 5	18	22.8	12	32
GN.33063	GN 6226-22-16-A1-MT-F	22	M 5	18	22.8	16	43
GN.33067	GN 6226-28-12-A1-MT-F	28	M 6	24	28.8	12	52
GN.33068	GN 6226-28-16-A1-MT-F	28	M 6	24	28.8	16	70
GN.33069	GN 6226-28-20-A1-MT-F	28	M 6	24	28.8	20	89
GN.33073	GN 6226-34-12-A1-MT-F	34	M 8	30	34.8	12	77
GN.33074	GN 6226-34-16-A1-MT-F	34	M 8	30	34.8	16	104
GN.33075	GN 6226-34-20-A1-MT-F	34	M 8	30	34.8	20	131

GN 6226-A2-F

Code	Description	d1	d2 Through-hole for screw	d3	d4	d5	l ±0.1	⚖
GN.33064	GN 6226-22-20-A2-MT-F	22	M 5	M6	18	22.8	20	55
GN.33070	GN 6226-28-30-A2-MT-F	28	M 6	M8	24	28.8	30	135
GN.33076	GN 6226-34-30-A2-MT-F	34	M 8	M10	30	34.8	30	199

GN 6226-A3-F

Code	Description	d1	d2 Through-hole for screw	d3	d4	d5	l ±0.2	t min.	⚖
GN.33065	GN 6226-22-30-A3-MT-F	22	M 5	M6	18	22.8	30	12	83
GN.33066	GN 6226-22-50-A3-MT-F	22	M 5	M6	18	22.8	50	12	141
GN.33071	GN 6226-28-50-A3-MT-F	28	M 6	M8	24	28.8	50	16	228
GN.33072	GN 6226-28-75-A3-MT-F	28	M 6	M8	24	28.8	75	16	335
GN.33077	GN 6226-34-50-A3-MT-F	34	M 8	M10	30	34.8	50	20	344
GN.33078	GN 6226-34-100-A3-MT-F	34	M 8	M10	30	34.8	100	20	676